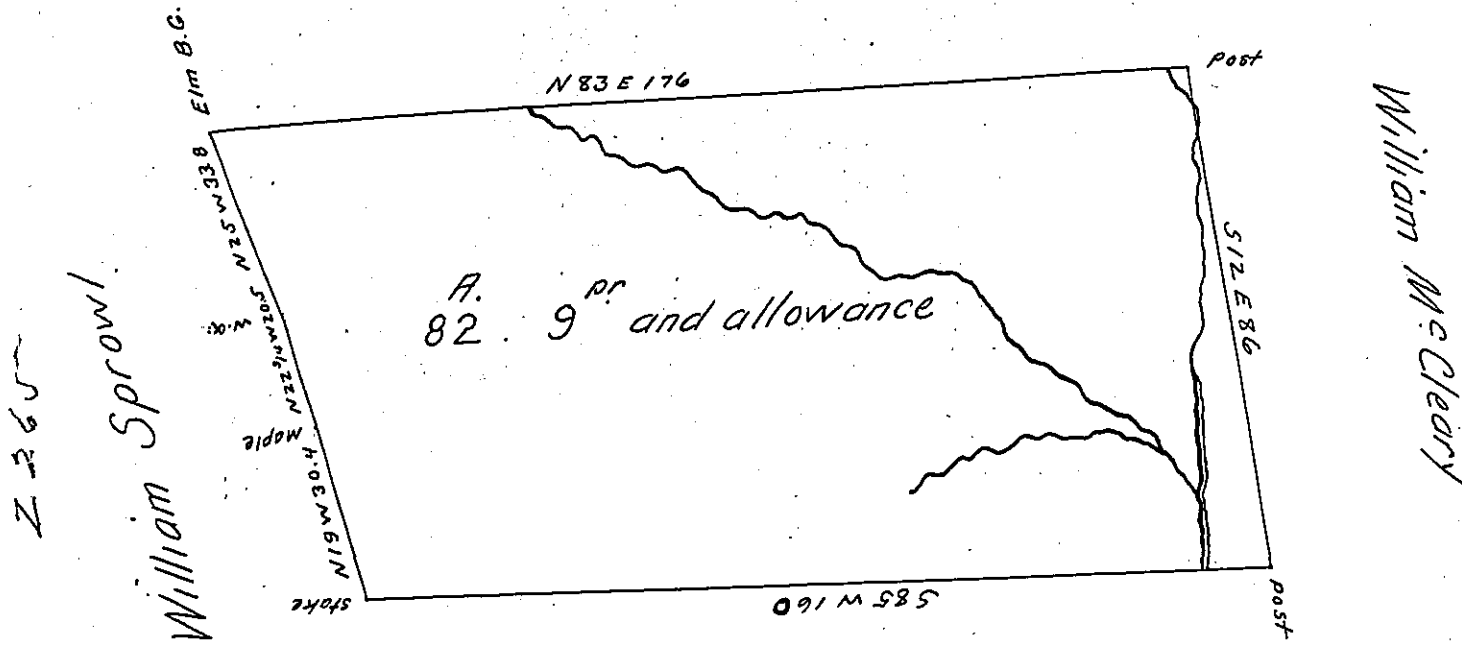


Joshua Coffield



Heirs of W<sup>m</sup> Enlow

The above is a draught of a Survey of a part of a tract of land for which a warrant issued to Abraham Enlow dec<sup>d</sup> and for which the heirs of W<sup>m</sup> Enlow dec<sup>d</sup> (Son of Said Abraham) desires to obtain a patent Containing 82 A. 9 perches and allowance. Situate in East Findley Township Washington County Pa. The Warrant to Abraham Enlow dated 7<sup>th</sup> Dec<sup>r</sup> 1795. The above tract Surveyed Nov<sup>r</sup> 21<sup>st</sup> 1851.

T. C. Noble

for H. F. Vankirk D.S.

IN TESTIMONY that the above is a copy of the original remaining on file in the Department of Internal Affairs of Pennsylvania, made conformably to an Act of Assembly approved the 16th day of February, 1833, I have hereunto set my Hand and caused the Seal of said Department to be affixed at Harrisburg, this twenty second day of May 1905.

*James P. Brown*  
 Secretary of Internal Affairs.